



**India Meteorological Department  
(Ministry of Earth Sciences)**

**BULLETIN NO. 7 (ARB/01/2023)**

**TIME OF ISSUE: 0530 HOURS IST**

**DATED: 07.06.2023**

**FROM: INDIA METEOROLOGICAL DEPARTMENT (FAX NO. 24643965/24699216/24623220)**

**TO: CONTROL ROOM, NDM, MINISTRY OF HOME AFFAIRS (FAX.NO. 23093750)  
CONTROL ROOM NDMA (FAX.NO. 26701729)**

**CABINET SECRETARIAT (FAX.NO.23012284, 23018638)**

**PS TO HON'BLE MINISTER FOR S & T AND EARTH SCIENCES (FAX NO.23316745)**

**SECRETARY, MOES (FAX NO. 24629777)**

**H.Q. (INTEGRATED DEFENCE STAFF AND CDS) (FAX NO. 23005137/23005147)**

**DIRECTOR GENERAL, DOORDARSHAN (23385843)**

**DIRECTOR GENERAL, AIR (23421105, 23421219)**

**PIB MOES (FAX NO. 23389042)**

**UNI (FAX NO. 23355841)**

**D.G. NATIONAL DISASTER RESPONSE FORCE (NDRF) (FAX NO. 26105912, 2436 3260)**

**DIRECTOR, PUNCTUALITY, INDIAN RAILWAYS (FAX NO. 23388503)**

**CHIEF SECRETARY, KERALA (FAX NO. 0471-2327176)**

**ADMINISTRATOR, LAKSHADWEEP ISLANDS (FAX NO. 0413-262184)**

**CHIEF SECRETARY, TAMILNADU (FAX NO. 044-25672304)**

**CHIEF SECRETARY, GOA (FAX NO. 0832-2415201)**

**CHIEF SECRETARY, KARNATAKA (FAX NO. 080-22258913)**

**CHIEF SECRETARY, MAHARASHTRA (FAX NO. 022- 22028594)**

**CHIEF SECRETARY, GUJARAT (FAX NO. 079-23250305)**

**CHIEF SECRETARY, DAMAN & DIU (FAX NO. 0260-2230775)**

**CHIEF SECRETARY, DADRA & NAGAR HAVELI (FAX NO. 0260-2645466)**

**Sub: Cyclonic Storm “Biparjoy” (pronounced as “Biporjoy”) over eastcentral and adjoining southeast Arabian Sea**

The cyclonic storm “Biparjoy” (pronounced as “Biporjoy”) over eastcentral and adjoining southeast Arabian Sea remained practically stationary during last 3 hours and lay centered at 0230 hours IST of 07<sup>th</sup> June, 2023 over the same region near latitude 12.5°N and longitude 66.0°E, about 900 km west-southwest of Goa, 1020 km southwest of Mumbai, 1090 km south-southwest of Porbandar and 1380 km south of Karachi.

It is likely to move nearly northwards and intensify gradually into a severe cyclonic storm over eastcentral Arabian Sea during next 06 hour and further into a very severe cyclonic storm over the same region during subsequent 24 hours.

Forecast track and intensity are given below:

| Date/Time(IST) | Position<br>(Lat. °N/ long. °E) | Maximum sustained surface<br>wind speed (Kmph) | Category of cyclonic<br>disturbance |
|----------------|---------------------------------|--|-------------------------------------|
| 07.06.23/0230  | 12.5/66.0                       | 80-90 gusting to 100                           | Cyclonic Storm                      |
| 07.06.23/0530  | 12.7/66.0                       | 90-100 gusting to 110                          | Severe Cyclonic Storm               |
| 07.06.23/1130  | 13.0/66.0                       | 100-110 gusting to 115                         | Severe Cyclonic Storm               |
| 07.06.23/1730  | 13.3/65.9                       | 105-115 gusting to 125                         | Severe Cyclonic Storm               |
| 07.06.23/2330  | 13.6/65.9                       | 110-120 gusting to 130                         | Severe Cyclonic Storm               |
| 08.06.23/1130  | 14.2/65.8                       | 115-125 gusting to 140                         | Very Severe Cyclonic Storm          |
| 08.06.23/2330  | 14.8/65.7                       | 125-135 gusting to 150                         | Very Severe Cyclonic Storm          |
| 09.06.23/1130  | 15.5/65.5                       | 135-145 gusting to 160                         | Very Severe Cyclonic Storm          |
| 09.06.23/2330  | 16.2/65.4                       | 140-150 gusting to 165                         | Very Severe Cyclonic Storm          |
| 10.06.23/1130  | 17.0/65.2                       | 145-155 gusting to 170                         | Very Severe Cyclonic Storm          |
| 10.06.23/2330  | 17.9/65.0                       | 145-155 gusting to 170                         | Very Severe Cyclonic Storm          |
| 11.06.23/1130  | 18.8/64.8                       | 140-150 gusting to 165                         | Very Severe Cyclonic Storm          |
| 11.06.23/2330  | 19.7/64.6                       | 130-140 gusting to 150                         | Very Severe Cyclonic Storm          |

**(i) Wind warning:**

**7<sup>th</sup> June:** Gale wind speed reaching 80-90 kmph gusting to 100 kmph is likely to prevailing over eastcentral Arabian Sea and adjoining areas of westcentral & southeast Arabian Sea. It is likely to become 105-115 kmph gusting to 125 kmph from evening of 7<sup>th</sup> June over the same area. Squally wind speed reaching 40-50 kmph gusting to 60 kmph is likely over adjoining areas of westcentral & south Arabian Sea and along & off north Kerala-Karnataka-Goa coasts.

**8<sup>th</sup> June:** Gale wind speed reaching 110-115 kmph gusting to 125 kmph is likely to prevail over eastcentral Arabian Sea and adjoining areas of westcentral & south Arabian and it is likely to become 120-130 kmph gusting to 145 kmph from evening of 8<sup>th</sup> June over the same area. Squally wind speed reaching 40-50 kmph gusting to 60 kmph is likely along & off Karnataka-Goa-Maharashtra coasts.

**9<sup>th</sup> June:** Gale wind speed reaching 130-140 kmph gusting to 155 kmph is likely to prevail over central Arabian Sea and it is likely to become 140-150 kmph gusting to 165 kmph from evening of 9<sup>th</sup> June over the same area. Squally wind speed reaching 50-60 kmph gusting to 70 kmph is likely over adjoining areas of South Arabian Sea. Squally wind speed reaching 40-50 kmph gusting to 60 kmph is likely along & off Karnataka-Goa- Maharashtra coasts.

**10<sup>th</sup> June:** Gale wind speed reaching 145-155 kmph gusting to 170 kmph is likely to prevail over central Arabian Sea. Squally wind speed reaching 40-50 kmph gusting to 60 kmph is likely over adjoining areas of south Arabian Sea and along & off north Karnataka-Goa-Maharashtra coasts.

**11<sup>th</sup> June:** Gale wind speed reaching 145-155 kmph gusting to 170 kmph is likely to prevail over central & adjoining north Arabian Sea. Squally wind speed reaching 40-50 kmph gusting to 60 kmph is likely over adjoining areas of eastcentral Arabian Sea and along & off Goa-Maharashtra coasts, northeast Arabian Sea and along & off Gujarat coasts.

### **(iii) Sea condition**

**7<sup>th</sup> June:** Sea condition is likely to be high to very high over eastcentral Arabian Sea and adjoining westcentral & southeast Arabian. Sea condition is likely to be rough to very rough over south Arabian Sea, along & off north Kerala-Karnataka-Goa coasts, Lakshadweep-Maldives areas.

#### **8<sup>th</sup> June:**

Sea condition is likely to be very high to phenomenal over central Arabian Sea and adjoining south Arabian and it is likely to become phenomenal from evening of 8<sup>th</sup> June over the same region.

Sea condition is likely to be rough to very rough over south Arabian Sea, along & off Karnataka-Goa-Maharashtra coasts.

**9<sup>th</sup> June:** Sea condition is likely to be phenomenal over central Arabian Sea. Sea condition is likely to be rough to very rough over adjoining areas of South Arabian Sea and along & off Karnataka-Goa- Maharashtra coasts.

**10<sup>th</sup> June:** Sea condition is likely to be phenomenal over central Arabian Sea. Sea condition is likely to be rough to very rough over adjoining areas of north & South Arabian Sea and along & off Karnataka-Goa- Maharashtra coasts.

**11<sup>th</sup> June:** Sea condition is likely to be phenomenal over central & adjoining north Arabian Sea. Sea condition is likely to be rough to very rough over adjoining areas of eastcentral Arabian Sea and along & off Goa-Maharashtra coasts, northeast Arabian Sea and along & off Gujarat coasts.

### **(iv) Fishermen Warning (Graphics Attached)**

Fishermen are advised not to venture into:

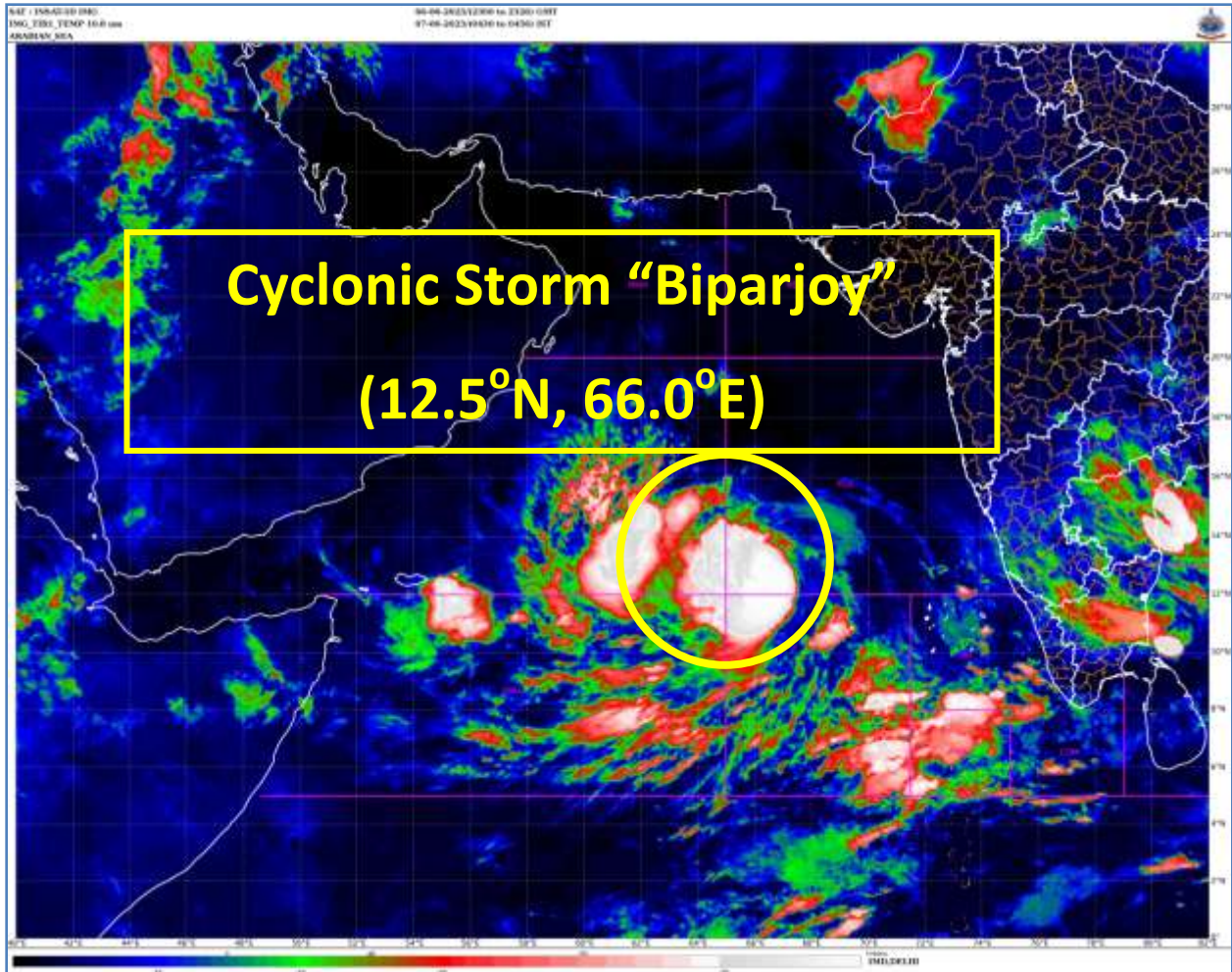
- (i) Central and adjoining areas of south Arabian Sea during 7<sup>th</sup>-9<sup>th</sup> June.
- (ii) Central and adjoining areas of north & south Arabian Sea on 10<sup>th</sup> June.
- (iii) Along & off along & off Kerala-Karnataka coasts, Lakshadweep-Maldives areas during 6<sup>th</sup> and 7<sup>th</sup>, along & off Konkan-Goa- Maharashtra coasts during 8<sup>th</sup>-11<sup>th</sup> and along & off Gujarat coast on 11<sup>th</sup> June.
- (iv) Those out at sea are advised to return to coast.

**The system is under continuous surveillance and the next message will be issued at 0830 hours IST of today, the 7<sup>th</sup> June, 2023.**

**(Shobhit Katiyar)**  
**Scientist C, Cyclone Warning Division, New Delhi**

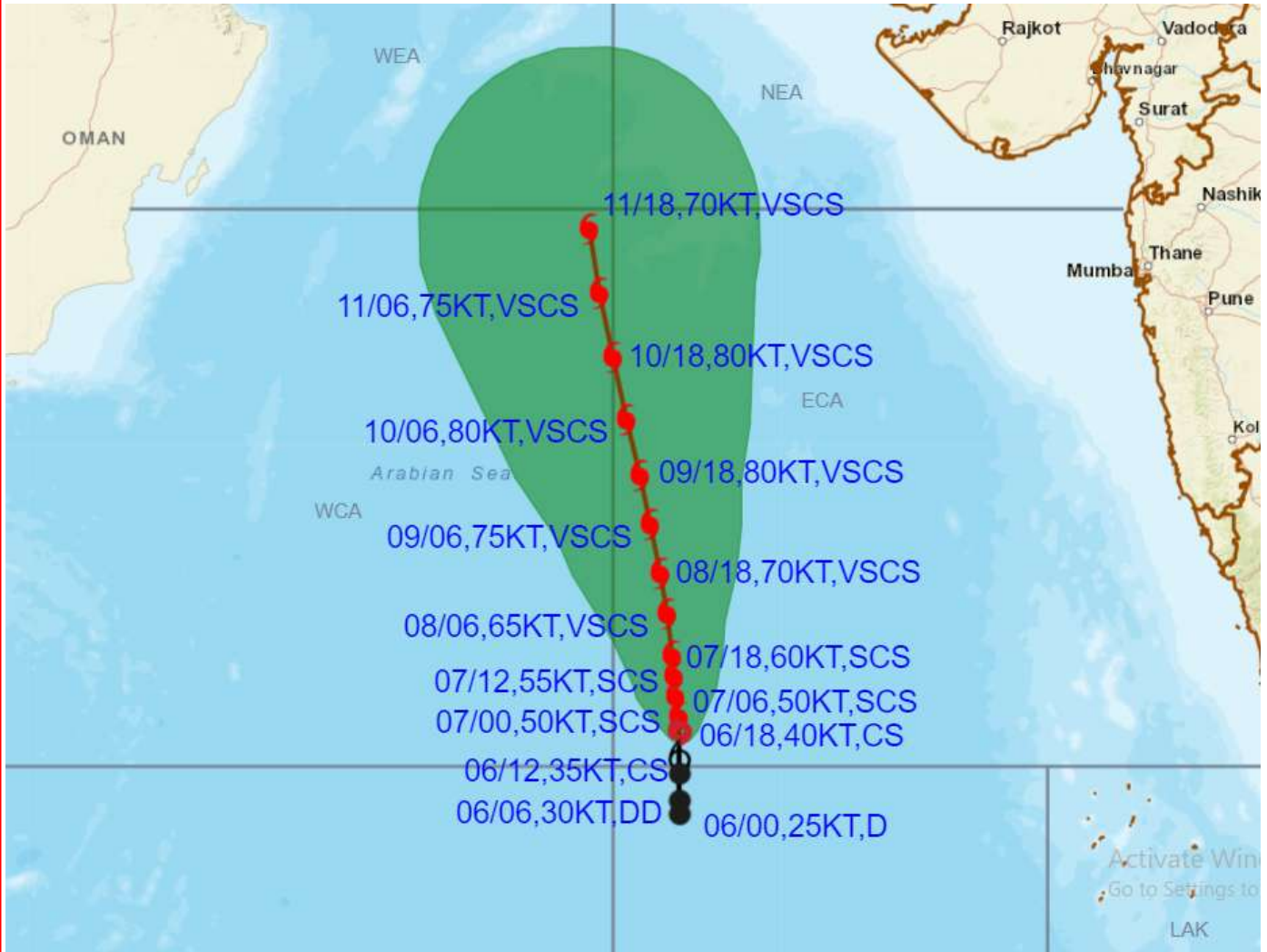
*Copy to: ACWC Kolkata/ ACWC Chennai/ CWC Bhubaneswar/CWCVisakhapatnam/CWC Ahmedabad/ MO Port Blair/MC Raipur/MC Bhopal/MC Hyderabad/RMC Nagpur*

**LEGEND: Heavy Rainfall:** 64.5 to 115.5mm, **Very Heavy Rainfall:** 115.6 to 204.4mm **Most Places:** more than 76% of total stations, **Isolated Places:** Less than 25% of total





**OBSERVED AND FORECAST TRACK ALONGWITH CONE OF UNCERTAINTY OF CYCLONIC STORM "BIPARJOY" OVER EASTCENTRAL AND ADJOINING SOUTHEAST ARABIAN SEA BASED ON 1800 UTC (2330 IST) OF 06<sup>TH</sup> JUNE 2023.**



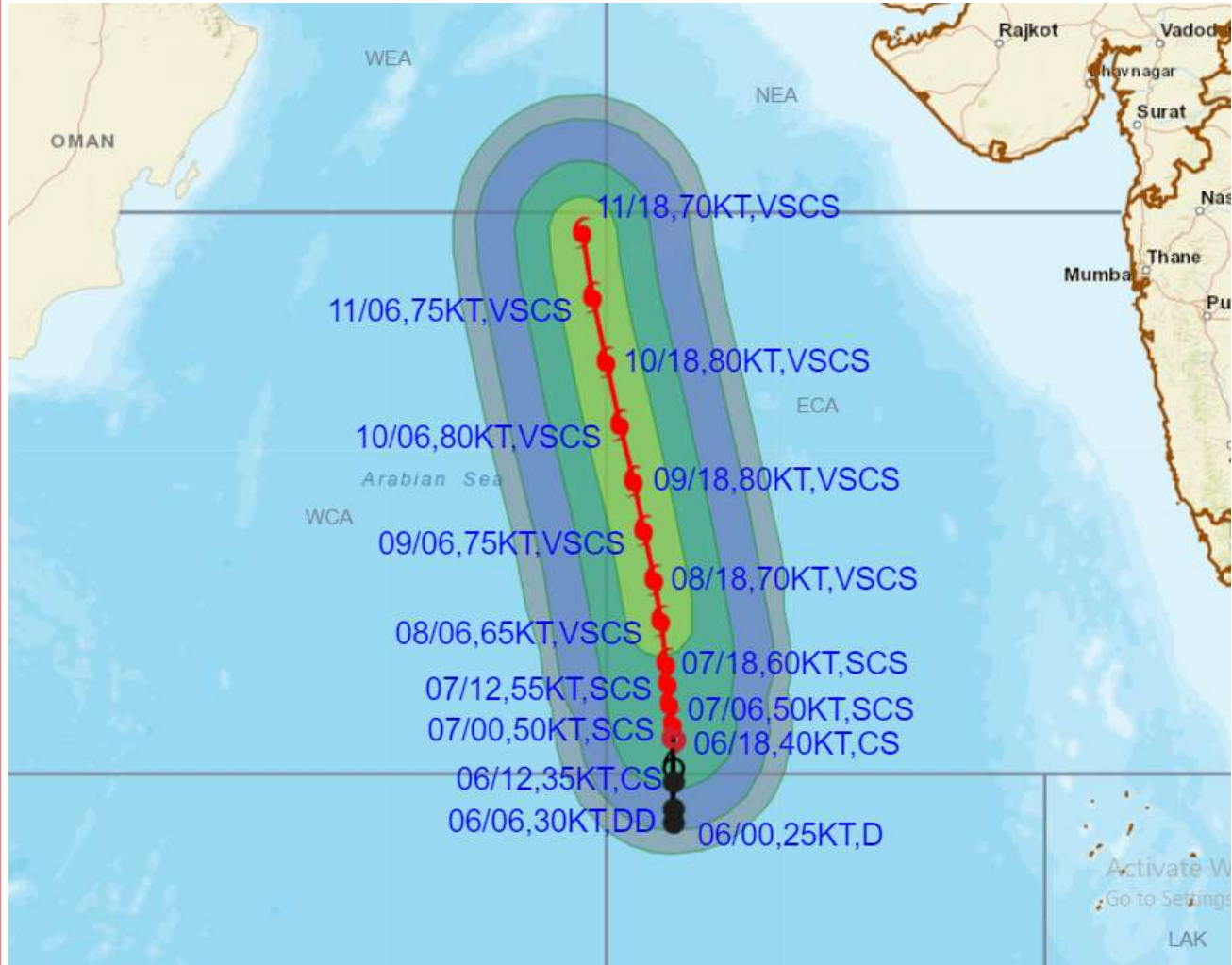
DATE/TIME IN UTC  
 IST=UTC + 0530  
 L: LOW PRESSURE AREA  
 WML: WELL MARKED LOW PRESSURE AREA  
 D: DEPRESSION (17-27 KT)  
 DD: DEEP DEPRESSION (28-33 KT)  
 CS: CYCLONIC STORM (34-47 KT)  
 SCS: SEVERE CYCLONIC STORM (48-63KT)  
 VSCS: VERY SEVERE CYCLONIC STORM (64-89 KT)  
 ESCS: EXTREMELY SEVERE CYCLONIC STORM (90-119 KT)  
 SuCS: SUPER CYCLONIC STORM ( $\geq$  120 KT)

- LESS THAN 34 KT
- 34-47 KT
- $\geq$  48 KT
- OBSERVED TRACK
- FORECAST TRACK
- CONE OF UNCERTAINTY





**OBSERVED AND FORECAST TRACK ALONGWITH QUADRANT WIND DISTRIBUTION OF CYCLONIC STORM "BIPARJOY" OVER EASTCENTRAL AND ADJOINING SOUTHEAST ARABIAN SEA BASED ON 1800 UTC (2330 IST) OF 06<sup>TH</sup> JUNE 2023.**



**DATE/TIME IN UTC**

IST=UTC + 0530

L: LOW PRESSURE AREA

WML: WELL MARKED LOW PRESSURE AREA

D: DEPRESSION (17-27 KT)

DD: DEEP DEPRESSION (28-33 KT)

CS: CYCLONIC STORM (34-47 KT)

SCS: SEVERE CYCLONIC STORM (48-63KT)

VSCS: VERY SEVERE CYCLONIC STORM (64-89 KT)

ESCS: EXTREMELY SEVERE CYCLONIC STORM (90-119 KT)

SuCS: SUPER CYCLONIC STORM (≥ 120 KT)

● LESS THAN 34 KT

○ 34-47 KT

● ≥ 48 KT

— OBSERVED TRACK

— FORECAST TRACK

— CONE OF UNCERTAINTY

AREA OF MAXIMUM SUSTAINED WIND SPEED:

— 28-33 KT (52-61 KMPH)

— 34-49 KT (62-91 KMPH)

— 50-63 KT (92-117 KMPH)

— ≥ 64 KT (≥118 KMPH)

**IMPACT OVER THE SEA**

| MSW (knot/kmph) | Impact                 | Action                                 |
|-----------------|------------------------|--|
| 28-33 (52-61)   | Very rough seas        | Total suspension of fishing operations |
| 34-49 (62-91)   | High to very high seas | Total suspension of fishing operations |
| 50-63 (92-117)  | Very high seas         | Total suspension of fishing operations |
| ≥ 64 (≥118)     | Phenomenal             | Total suspension of fishing operations |

## Fishermen warning graphics

